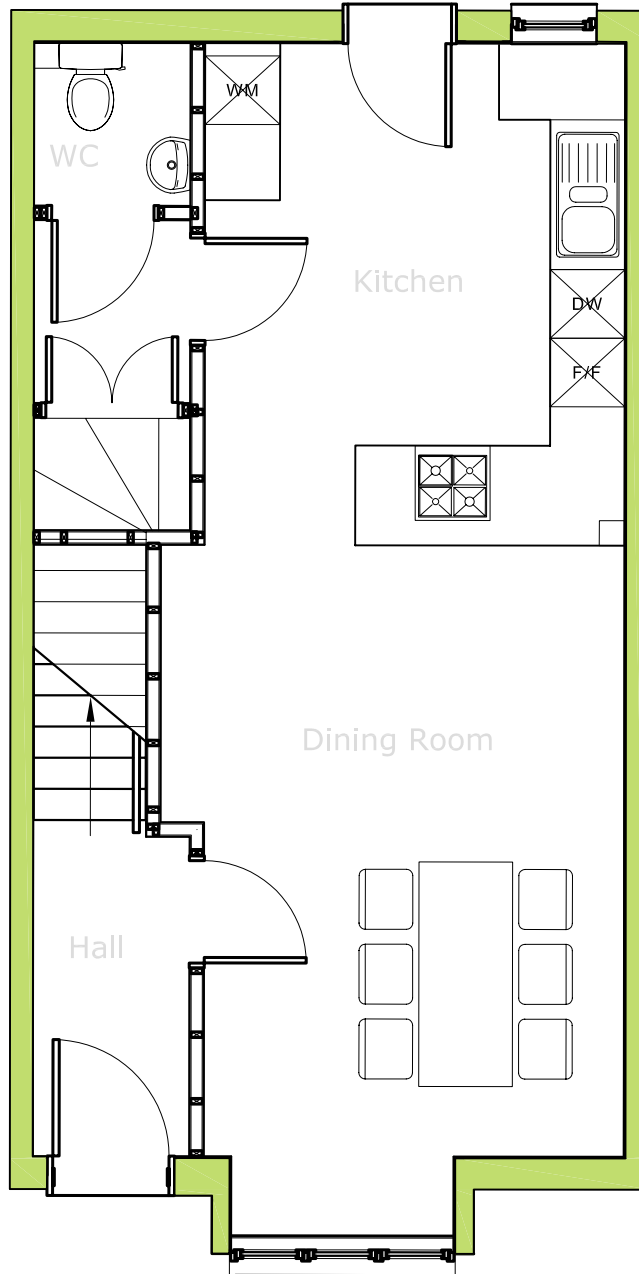




# HARBORNE CENTRAL

Town House 2E, Greenfield Road, Harborne,  
Birmingham, B17 0ES.



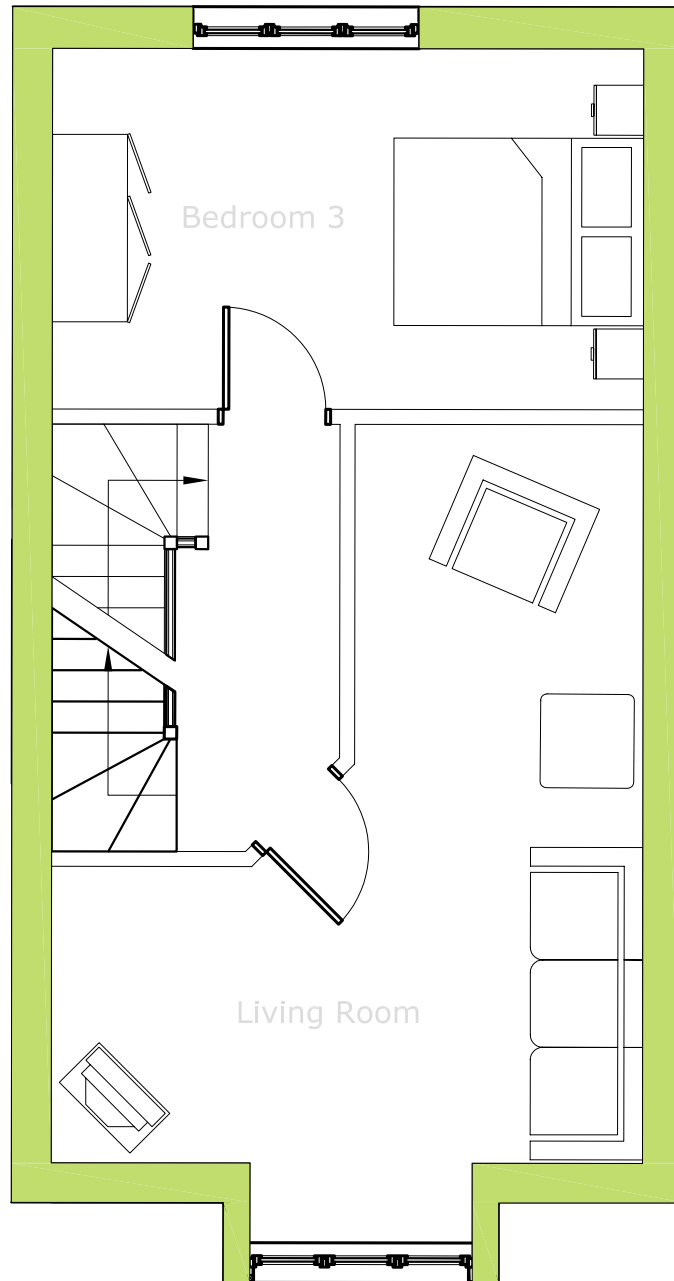
## Ground Floor

Kitchen	4021	x	3378mm	13' 2"	x	11' 1"
Dining Room (max)	5523	x	3728mm	18' 1"	x	12' 2"



## HARBORNE CENTRAL

Town House 2E, Greenfield Road, Harborne,  
Birmingham, B17 0ES.



### First Floor

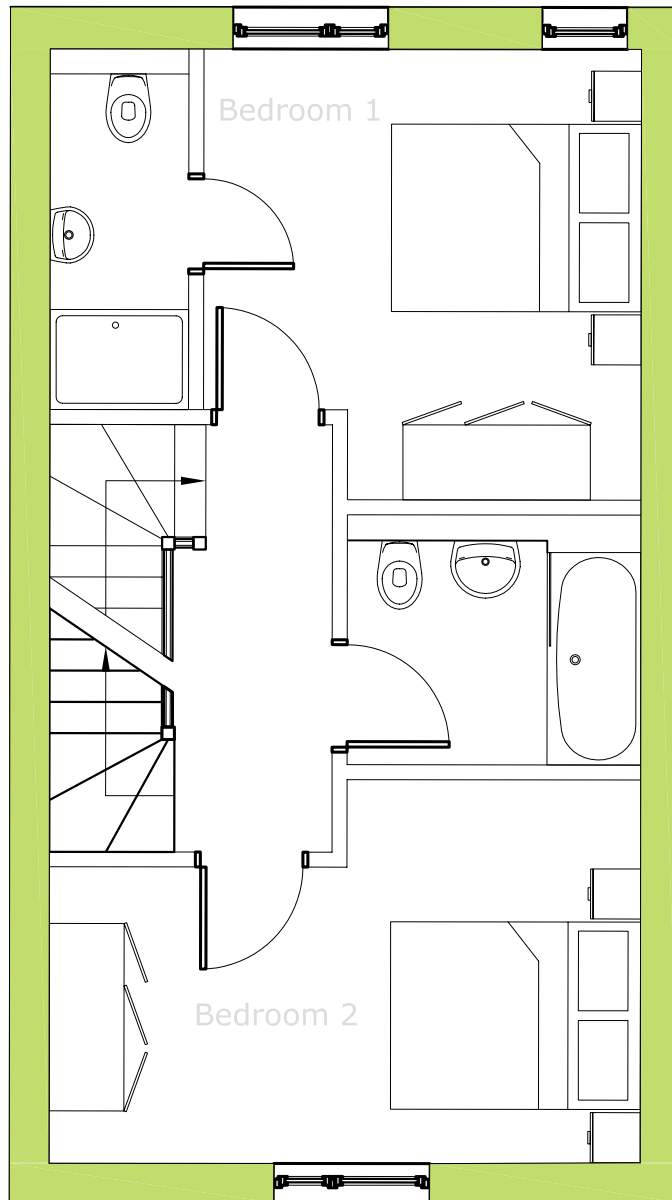
Bedroom 3 (max)	4731	x	2886mm	15' 6"	x	9' 5"
Living Room (max)	6653	x	4732mm	21' 9"	x	15' 6"

\* All measurements are approximate and are for general guidance only. Development layout not to scale.



## HARBORNE CENTRAL

Town House 2E, Greenfield Road, Harborne,  
Birmingham, B17 0ES.



## Second Floor

Bedroom 1 (max)	3606	x	3502mm	11' 10"	x	11' 5"
Bedroom 2 (max)	4731	x	3071mm	15' 6"	x	10' 0"

\* All measurements are approximate and are for general guidance only. Development layout not to scale.

